





Dolphin Cottage, Bletchington Road,
Kirtlington, OX5 3HF

Offers Over £700,000

Huge character, surprising space and light, pretty gardens and parking, all set in a village the envy of many. What more could you need?

An exceptionally stylish 19th century cottage, extended & improved to provide wonderful open-plan living with wide bifold doors to the garden, four bedrooms, a separate stone office/den with mezzanine, & parking. Lovely order throughout, great spec, & packed with character. VIRTUAL TOUR. CHAIN FREE

Kirtlington needs little introduction locally! It is, simply, one of the most popular villages in North Oxfordshire. Try the walks through Capability Brown's gardens in Kirtlington Park, or through the woodland in the old quarry, then perhaps have a pint in the Oxford Arms. In addition, the popular primary, and catchment for the secondary Marlborough School in Woodstock, make this a great place for families. Combine this with four different London-bound stations in easy reach, A34 and M40 access, plus reliable bus services to Oxford, Kidlington etc, and it's also one of the most accessible locations There are many reasons to live here. But its all-inclusive ethos, sense of vibrancy and spirit makes Kirtlington the sort of place people rarely want to leave.

Dolphin Cottage is one of a handful of period cottages on a pretty road just a couple of minutes' walk from all the amenities. Extended and heavily improved in recent years, the house now mixes the best of modern efficient fittings with the huge charm of its 18th century origins. The flow is excellent, with a particularly generous downstairs which offers more living space than many cottages in this price bracket, majoring on a fab kitchen with bifold doors that open almost the whole rear wall onto the garden.

It's not just the character that impresses, it's also the smaller details. Even the wooden windows have been replaced with hardwood units of high quality. But more than that, it combines style and taste with comfort and approachability - this is a house equally at home hosting a soiree or slumping down in front of the fire on a Sunday night. It's pretty much the perfect village house.



The entrance most used is to the side of the house behind the driveway, by far the most practical. This opens into a bright hall, at the end of which a glazed door provides your first glimpse of the garden at the rear. To the right side there is a spacious storage area big enough for coats, boots, buggies - what have you - alongside fitted seating with storage beneath. A door on the right leads to a well planned utility room that includes space for white goods, a sink, WC and various cupboards, and here there is also the central heating boiler.

Walking through the hall, the space opens up dramatically. The wonderful kitchen and dining area features glazed concertina doors that open onto the garden across almost the whole rear wall. This combines wonderful natural light with a delightful view of the garden. On the left side a long run of elegant kitchen units are fitted, offering a wealth of storage - even down to plate racks - with a Belfast style sink and large 5 ring oven that are perfectly suited to the style. And on the opposite side stands a large dresser and American style fridge freezer.

Quite apart from family life, this room was clearly created with social gatherings in mind as the central space can easily house a huge dining room table, seating anywhere from 8-12 people if needed. In contrast, as you walk towards the front of the house, daytime family and social space changes to a cosy living room with huge fireplace containing a log burner - the perfect accompaniment to winter nights. It's a lovely, well proportioned room designed for relaxation once the day-to-day is done. The 'formal' front door is situated here, but we suspect like many cottages it'll see use for greeting guests at Christmas and little more!

From the stairs leading off the lounge, the first floor is spacious. At the rear, a very pleasant double bedroom offers the welcome and unusual feature of a Juliette balcony overlooking the garden. Opposite, a further double is equipped with large fitted wardrobes making sure the living space is efficient. And next door the smallest bedroom is perfect for a child, or could also be used as a study space if required. On this level the family bathroom includes a modern, high quality suite that mixes pristine white and chrome sanitaryware with natural timber detailing, giving it a lovely, warm feel.

On the top floor, the main suite is a lovely place to be. The landing is fitted with a useful bank of eaves storage to the side. Dead ahead charming truss timbers - probably dating to the time this cottage was thatched - frame an en-suite bathroom that is beautifully appointed. Even the basin sits on a piece of the original crossmember timber, a great nod to its history. The bath and sink are 'open' to the landing, but the WC is tucked away in a small room over the stairs. At the rear, the main bedroom is lengthy and large, culminating on a window that offers a really great view over the neighbours towards open fields.



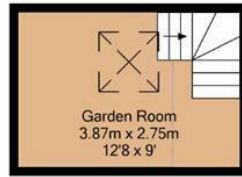
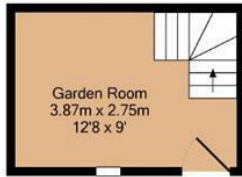


Outside, to the front the house sits well back from the road, separated from it by pleasant borders stocked with various shrubs and flowers. The central porch is rarely used, with the entrance to the right behind a very useful driveway for one car - note the road is not restricted and offers plenty of additional parking. Behind the house a pretty and almost south facing garden is mainly lawn, with pretty landscaping including a terrace, plus various hedges and planted beds flanking either boundary.

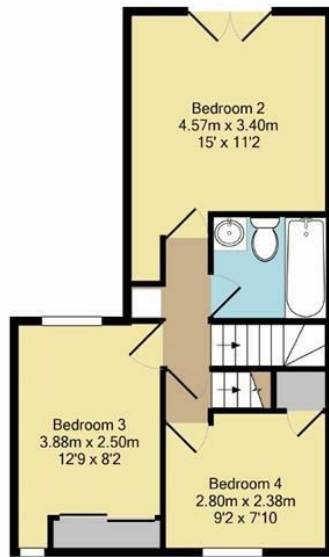
At the far end the stone outbuilding has been converted to offer some seriously flexible space. The downstairs is used today as an office. Above it, a mezzanine level with a roof window overhead makes an awesome overspill guest room, or storage, or teenage hang-out - your choice. And even the stairs running up to it are fitted with store cupboards beneath!

Mains water, electric, gas c.h.
Cherwell District Council
Council Tax band C
£2,168.50 p.a. 2025/26

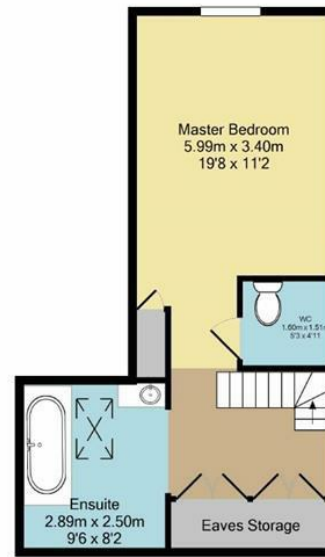




Ground Floor
Approx. Floor
Area 70.3 Sq.M.
(757 Sq.Ft.)



1st Floor
Approx. Floor
Area 42.1 Sq.M.
(454 Sq.Ft.)



2nd Floor
Approx. Floor
Area 36.4 Sq.M.
(392 Sq.Ft.)

Total Approx. Floor Area 148.8 Sq.M. (1602 Sq.Ft.)

Measurements are approximate. Not to scale. Illustrative purposes only. Produced by wideangles.co.uk. Made with Metropix ©2019.



Material Information QR code:



Energy Efficiency Rating

	Current	Potential
Very energy efficient - lower running costs		
(92 plus) A		
(81-91) B		85
(69-80) C	74	
(55-68) D		
(39-54) E		
(21-38) F		
(1-20) G		
Not energy efficient - higher running costs		
England & Wales	EU Directive 2002/91/EC	

Important Notice

These particulars are offered on the understanding that all negotiations are conducted through this company. Neither these particulars, nor oral representations, form part of any offer or contract and their accuracy cannot be guaranteed. Any floor plan provided is for representation purposes only, as defined by the RICS Code of Measuring Practice and whilst every attempt has been made to ensure their accuracy the measurements of windows, doors and rooms are approximate and should be used as such by prospective purchasers. Any services, systems and appliances mentioned have not been tested by us and we cannot verify that they are in working order.

to discuss this property or to arrange a viewing please call, or drop us a line interested@cridlands.co.uk

01869 343600

<https://www.cridlands.co.uk>

